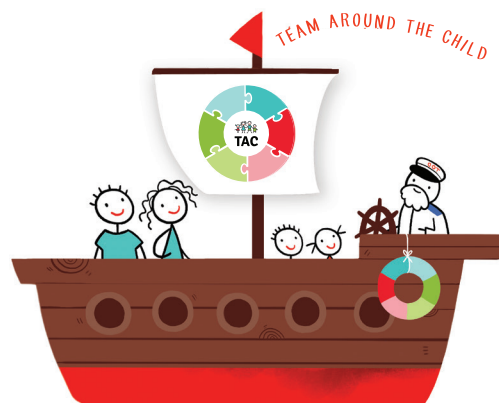


# IN THE SAME BOAT

Conference on Early Intervention and Interdisciplinary  
Cooperation and Family Support

► **May 12th - 13th 2022** ► **ZLÍN** ►



## TOPICS OF THE CONFERENCE:

- The Team Around the Child method (TAC) in practice at the Early Intervention Centre EDUCO Zlín
- TAC experience from the point of view of caregivers and professionals
- Aspects of Interdisciplinary cooperation abroad (Portugal, Great Britain) and in the Czech republic
- Inclusion of children with disabilities in the kindergartens
- Managing your own resources (overload of the parents and how to prevent it)

**Place:** Tomas Bata University, Štefánikova 5670 (building U18)

**After-party:** Wine & Food shop Lavite, Lešetín II 7147 (Zlín)

## THURSDAY 12/ 5/ 2022

08:20–09:00 REGISTRATION of participants

09:00–09:15 OPENING of the Conference

**09:15–09:45 Introduction to the Team Around the Child method**

Lecture

**09:45–10:50 Introduction to the Team Around the Child method**

Lecture

10:50–11:05 COFFEE BREAK

**11:05–12:00 The Team Around the Child method (TAC) in practice at the EI Centre EDUCO Zlín**

Presentation

12:00–13:00 LUNCH (at the UTB premises)

### DAGMAR MACHOVÁ

Head of EDUCO

### SIMONA ČUBÁKOVÁ

Head of the Department of Social and Legal Protection at the Regional Authority in Zlín

### DAGMAR MELKOVÁ

TAC Coordinator for EDUCO

### PETER LIMBRICK

TAC Author, GB (online)

### ELIZABETH WASSALL

Speech and Language Therapy Service Manager, Walsall Healthcare NHS Trust, GB

### JIŘÍ KOREC

City of Zlín Mayor

### DAGMAR MACHOVÁ

Head of EDUCO

### MAREK MIKLÁŠ

Facilitator for TAC EDUCO, Head of Zlín Children's Centre

### HANA WOHLGEMUTHOVÁ

Head of EI Centre DOREA

**13:00–13:55** **Aspects of Interdisciplinary cooperation abroad (PT, GB) and in CR**  
Panel discussion Nr. 1

13:55–14:10 BREAK

**14:10–15:05** **Cooperation of Early Intervention, Special pedagogical centre, kindergarten and parents, sharing experiences from the Czech Republic and abroad**  
Panel discussion Nr. 2

15:05–15:20 BREAK

**15:20–16:15** **The benefit of TAC for the professionals and for the parents**  
Panel discussion Nr. 3

**16:15–16:30** **Conclusions from the panel discussions, summary of the day**

## EVENING AFTER-PARTY

**18:00–22:00** **The evening after-party at Wine & Food shop Lavite**

## FRIDAY 13 / 5 / 2022

08:30–09:00 Registration of participants

09:00–09:05 OPENING of the second day

**09:05–09:25** **Overload of the parents - a recurrent topic in the families with children with special needs**  
Introduction

### LEONOR CARVALHO

Head of EI, ANIP, PT

### JULIET DAVIES

Coordinator, Bright Star Children Services, GB

### BECKY HADLEY

Head of Service (NIAT), GB

### ANNA KUČEROVÁ

Head of Services, EI Moravia, Silesia, Tamtam o.p.s.

### JANA ČELŮSTKOVÁ

EI Consultant and Methodologist, EDUCO

### CARLA LANÇA

Coordinator of EI, ANIP, PT

### BOHUSLAVA ŘEHŮRKOVÁ

Head Teacher, Kindergarten Lipa

### HANA ŤOKOVÁ

Mother

### IVANA VICHERKOVÁ

Special Educator, SPC Zlin-Lazy

### KLÁRA BUREŠOVÁ

Assistent Teacher, Kindergarten Vlčnov

### KLÁRA KACHYŇOVÁ

Clinical Speech Therapist, Member of the Czech Association of Clinical Speech Therapist

### BECKY LOGAN

Community Paediatric Physiotherapeut, WalsallHealthcare NHS Trust, GB

### JANET RICKMAN

Chair of the National Portage Association of England and Wales, GB

### HANA ŤOKOVÁ

Mother

### JIŘÍ TRČKA

Lecturer, MADIO z.s.

### JANA META NUDNI

Mother

### ANDREA TAŤÁK

Consultant and Coordinator of EI, EDUCO

### ANDREA TIPPER

Specialist Health Visitor, Coordinator of TAC Walsall Child Development Centre, GB

- 09:25–10:15** **Overload of the parents - a recurrent topic in the families**  
Panel discussion Nr. 4
- 10:15–11:00** **How to manage your own resources as a parent and as a professional**  
Panel discussion Nr. 5
- 11:00–11:15 BREAK
- 11:15–12:15** **How to manage your own resources**  
Workshop for parents - part 1  
**How to support parents in their personal care**  
Workshop for professionals - part 1
- 12:15–13:15 LUNCH (at the UTB premises)
- 13:15–14:30** **How to manage your own resources**  
Workshop for parents - part 2  
**How to support parents in their personal care**  
Workshop for professionals - part 2
- 14:30–14:50** **Conclusions from the panel discussions and workshops**
- 14:50–15:10 CLOSING of the Conference

**SIMONA ČUBÁKOVÁ**

Head of the Department of Social and Legal Protection at the Regional Authority in Zlín

**PETRA DŘÍMALOVÁ**

Mother

**PETER LIMBRICK**

TAC Author, GB (online)

**PŘEMYSL MIKOLÁŠ**

Psychologist, Psychotherapist

**ANDREA TAŽÁK**

Consultant and Coordinator of EI, EDUCO

**PAVLÍNA KOVÁŘOVÁ**

Coordinator of EI Třebíč, Family Therapist

**DOMINIKA MARKOVÁ**

Lecturer, Mental Coach, Therapist

**JITKA ŠEVČÍKOVÁ**

Lecturer, Mentor, Coach

**GABRIELA ŠUSTKOVÁ**

Head of the Department for Prevention, Education and Development, MADIO, z.s.

**JITKA ŠEVČÍKOVÁ**

Lecturer, Mentor, Coach

**DOMINIKA MARKOVÁ**

Lecturer, Mental Coach, Therapist

**JITKA ŠEVČÍKOVÁ**

Lecturer, Mentor, Coach

**DOMINIKA MARKOVÁ**

Lecturer, Mental Coach, Therapist

**GABRIELA ŠUSTKOVÁ**

Head of the Department for Prevention, Education and Development, MADIO, z.s.

**JITKA ŠEVČÍKOVÁ**

Lecturer, Mentor, Coach

## Current information

- ▶ [www.ranapecezlin.cz/na-jedne-lodi](http://www.ranapecezlin.cz/na-jedne-lodi)
- ▶ [ranapece.zlin@volny.cz](mailto:ranapece.zlin@volny.cz)

## This Conference is organized by



**Early Intervention Centre EDUCO Zlín z. s.**

Chlumská 453, 763 02 Zlín

[www.ranapecezlin.cz](http://www.ranapecezlin.cz) | [ranapece.zlin@volny.cz](mailto:ranapece.zlin@volny.cz) | 739 777 729